

Pedigree

Pedigree

**Feed
the good™**

Adoption Manual



Better Cities for Petsts™

At MARS Petcare, we uly believe that pets make fhe world a better place. We are committed fo live our purpose A Better World For Pets™.

To help fulfill our purpose, we aspire to end pet homelessness in a workplace where:



- No pets are uncared for.
- No pets are unwanted.
- No pets are unwelcome.



Better Cities for Pefs™ is about creating an environment that is conducive for pet owners and aninil welfare, to make life beter for pets and the Community.



Teaching responsible pet ownership



Advocating for pet-friendly public spaces



Welcoming and loving all types of dogs and cats

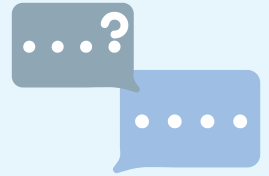
We aspire to help re-home homeless animals across Southeast Asia and are kick-stating our efforts in Thailand ond the Philippines.

Choosing to adopt a pet is a great decision!

Not oly are you able fo give a shelter animal a home, you wil get to enrich your life and make your community better and pet-friendly!

Here are 5 things to consider when adopting a pet:

- 1. Choose the right pet**
 - Consider you and your family's lifestyle, needs and preferences before deciding on the type and size of pet.
 - Speak to an adoption counselor, previous owner or foster families to find your right match.



- 2. Be prepared ahead of time**
 - Plan for the arrival of your pets; do yuor research to understand its needs.
 - Get your home ready for your new pet and gather supplies early.



- 3. Create a pet-friendly space**
 - Set up dedicated space for your pet.
 - Store medication and dangerous food away.
 - Put away electric cords, trash and cleaning supplies.
 - Remove toxic or poisonous plants.



- 4. Arrange for regular vet care.**
 - Visit the vet for a health check and arrange for necessary vaccinations.
 - Routine checkups can protect your pets from life-threatening conditions by detecting disease early.



- 5. Be prepared for emergencies**
 - Ensure your pet wears collars and tag wit up-to-date contact informations.
 - Introduce your pet to the neighborhood to help pets and people in communities familiarize with one another.



First Day at Home

This is a big move for your dog! So do ensure you have all the time you can spare to be with your new family member! Spend time showing your puppy around, feeding her, and playing with her. For a dog that's lived in a different home and a rescue center this can be more stressful than usual— so take things gently.

- 1 When you arrive home, take your dog straight to the area where you will be happy for him or her to go to the toilet. Keep them there until they go, praise them afterwards then take them back into the house. Dogs are creatures of habit and will return to the same place to go to the toilet. For further advice, read our articles on toilet training and what to do if your puppy has an accident.
- 2 Keep your daily routine the same from day one. It may be tempting to shower your rescue dog with relaxed rules and spontaneous gestures, but you will end up with an unsettled dog.
- 3 In the same vein, don't fall into the trap of feeding your dog on demand. His or her appetite may be erratic initially, but it will settle faster with a regular routine.
- 4 Or the first few days, stick to the diet given to you by the rescue home. You can change it slowly over time by gradually weaning from old food to new food over 5-7 days.
- 5 Don't let your dog off the lead in any open spaces until you've had a chance to practice recall in secure areas. Recall is an important part of the bonding process. For further information, read our article on recall.
- 6 Your dog will need a few days to get used to your household so don't introduce any new people until they're ready.
- 7 Consistency will be very important to your new dog so decide on house rules, such as where the dog is and isn't allowed and make sure everyone sticks to them.
- 8 For the same reason, if you have a cat, do not introduce them immediately. Try swapping their scents so that both your cat and dog are familiar with each other before they're fully introduced.
- 9 After seven days or so, take your dog along to your local vet to register them and discuss any future veterinary treatment. Remember to take your vaccination certificate with you.

10 Dog Training Do's and Don'ts

To help make training easier for you, here's a list of **Top 10 Training Do's and Don'ts:**

✓ Do's

- Focus on your dog. Bring him into your world by understanding his instincts and natural behaviors.
- Be honest. Never fool him into doing what you want or tease him with commands you teach.
- Begin each command with the end in sight. Reward him lavishly—but only when she completes the task you've set.
- Be consistent. Always use the same words for desired behavior and the same tone of voice.
- Think ahead. Anticipate your dog's actions before she moves.
- Reward immediately.
- Teach one command at a time.
- Be patient. Allow enough time for your pooch to take in your command and then act.
- Enjoy yourself. Play with your dog before and after each training session.
- Be kind. A poorly trained dog is the fault of the trainer, not the dog.

✗ Don'ts

- Don't allow others to pamper him any more than you. You're the de facto alpha dog in your home pack—and he must look to you for leadership.
- Don't finish a training session on a bad note. Remain positive and praise him for progress.
- Don't punish him while you're angry.
- Don't lose your temper.
- Don't chase him. The idea is to make him come to you.
- Don't deceive. Never shower him with praise to bring him to you and then punish him because he's been naughty.
- Don't repeat. Be patient, but don't overuse commands.
- Don't discipline for disobedience, unless you're certain that he understood the command you gave. Discipline and punishment are two very different things.
- Don't reward your dog for a given behavior, then, later admonish him for the same behavior. Consistency is crucial.
- Don't allow anybody else to command.

***if your efforts are unsuccessful, then talk to a professional trainer.**

How do I introduce my new dog to my cat?

If your new pooch doesn't immediately have the run of the house, this will help your cat feel less threatened. Do keep these dog training tips in mind to ensure a smooth transition for both your dog and cat.



- 1** It's a good idea to keep your new dog in an indoor pen when you first bring him home, or use a stairgate to limit your dog to one room.
- 2** Place the pen - with food, water, bed and toys - in the busiest part of the house. This will allow your cat to investigate the dog at its own pace, without getting too close. They both can get used to each other's scent.
- 3** When both pets seem comfortable with each other's presence, try feeding your cat outside the pen whilst the dog is eating their food inside. This will help them to get used to closer contact.
- 4** The next stage is to try introducing them outside the pen. Hold your dog and allow both animals to observe and interact with each other.
- 5** Over the next few days bring the dog out of the pen more frequently, allowing him to explore. As your cat becomes more tolerant of its new housemate, you can increase the contact between them.
- 6** Keep your dog away from your cat's food. Cat food is normally very high in protein and could affect your dog adversely.



Adopting A Second Dog

Is it a good idea to adopt a new dog when you have a senior dog at home?

Things to consider:

-  Proper introductions when bringing a new dog into a family with a senior dog, it's important to make sure that the two dogs get along harmoniously. Getting them both off on the right paw is vital to their future relationship, so make sure you introduce the dogs prior to "moving in" day. It's a good idea to do this in a pleasant environment on neutral ground, not in what will be their shared home. Both dogs should be kept leashed during the meeting, with a caregiver for each dog. This ensures that it will be easy to separate them if they start to show sign of aggression. If there is growling, or other signs of aggression, separate the dogs, distract them each with play, and then try again.
-  Don't scold; it's important that you do everything possible to make the experience pleasant, as this is what they will remember about the other dog. The transition will be easier if they associate each other with treats and a fun day at the park, rather than being reminded of a scolding when they see the other dog. Of course, part of ensuring that the experience is pleasant is to be sure that the dogs are up-to-date on their vaccinations.

A senior dog and a puppy.

If you have an older dog, and are bringing a puppy into your home, the older dog may feel that his turf is being invaded. As a result, he may be wary of the puppy. To help the senior canine feel more comfortable, it's a good idea to wait until the puppy is asleep before you introduce the dogs. While keeping a firm grip on the older dog's collar, let him sniff around the puppy. Also, make sure the older dog gets some quiet time alone with you during the first few weeks of him sharing his home with the puppy.



The Five-point Health Check for Dogs

Just as we take care of ourselves, we must also know how to do it for our dogs. Remember to examine all of the below five areas in your dog:



Teeth and Gums

- Regular veterinary dental cleaning along with specially designed toothbrushes, toothpaste and oral care treats such as DentaStix® can help reduce tartar build-up.
- Lift your dog's lips away from his gums and press a finger firmly over an upper tooth. When taken away, the white color of the finger imprint on the gum should return to pink.
- Open his mouth to inspect all his teeth. Beware of tartar build-up, which is yellow to dark brown in color, and can lead to periodontal disease. Get it checked by a vet.



Spot Checks

- Check for unusual lumps or bumps by placing both hands on top of your dog's head and moving down under the chin.
- Move your hands behind the front legs, under the shoulders, down the back, over the hips, and down the legs.
- Inspect your dog's claws and footpads for cuts or cracks. Report unusual lumps to a veterinarian. Do keep your dog's toe-nails trimmed as and when required.



Eyes and Ears

- Look for normal pupil size and responsiveness of the pupil to light. A colored discharge can be a sign of infection. Ears should appear clean, pink in color (not bright pink), and free of debris and strong odors.
- Gently pull down the lower eyelid to check for a pink color. The whites of the eye should be glossy white with no redness.
- Check for wax, especially dark wax, which may indicate the presence of ear mites or infection.



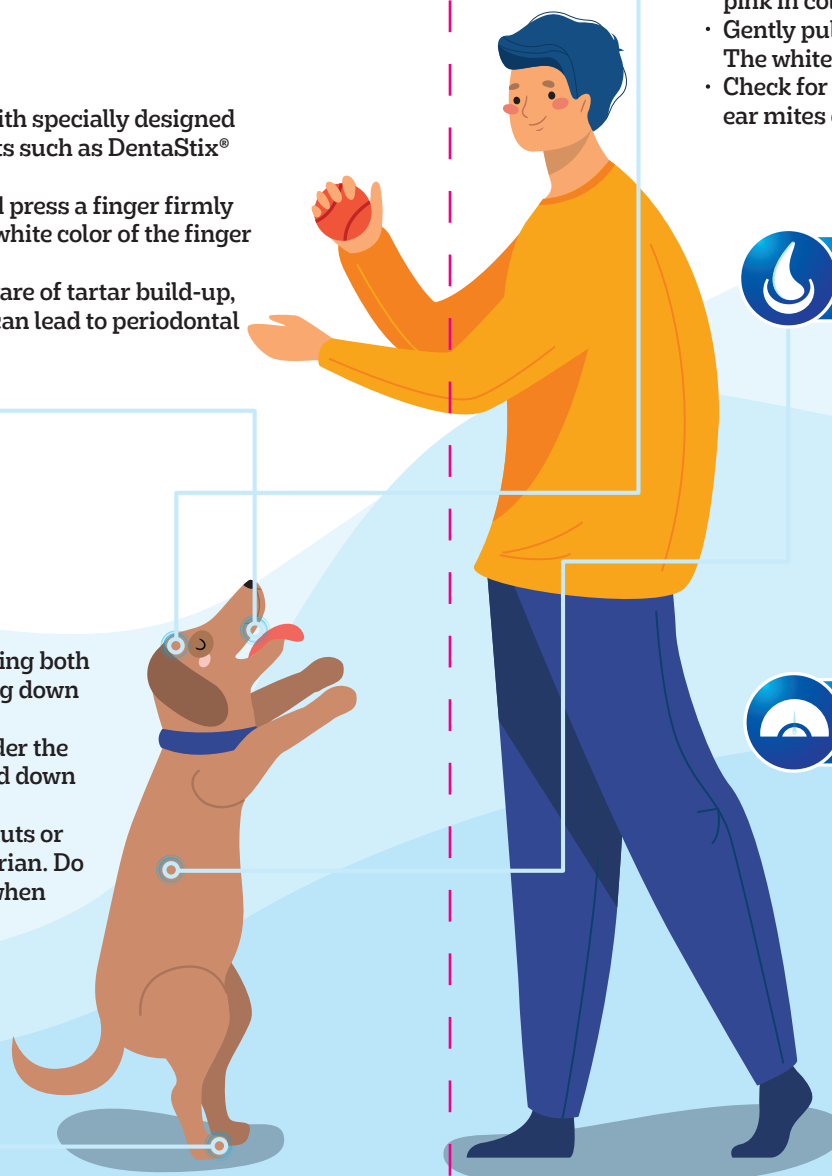
Coat and Skin

- Dogs with a dull or matted coat may not be receiving all necessary nutrients or may have a disease condition.
- The coat should feel smooth from head to tail. Part the fur near the head and along the spine to check for flakes, scales, or cuts.
- Check for the signs of fleas at the base of the tail and on the rump and stomach. Fleas can be treated with dips, shampoos, and sprays.



Weight Check

- Weight your dog regularly, but weight is not a reliable parameter.
- If your dog is overweight, discuss a weight reduction program with your vet. Cut out all treats and table snacks.
- Implement an exercise program. Starting with short periods and gradually increasing the time.



How to: Bathing your dog

Bathing your dog can be a fun activity, not just for him, but you are too. If she's already familiar with bath time, it's only a matter of technique. For a novice dog, first get her used to the idea of standing in the bath — you could even make this a game for treats! We generally do not advise bath for young puppies, particularly in winter. A sponge bath with plain luke warm water ought to do the trick. When he grows up to an adult, you can use dog shampoo, generally twice a month.



Brush Before Wetting

Always brush the coat before wetting it. This will remove any matted or loose hair from his coat and will also make cleaning with the shampoo much easier.



Sink, tub, or outdoors?

Little dogs are easier. You can bathe them in a kitchen sink. A larger dog will require a tub. Use a hair catcher in the drain to prevent clogging.



Shampoo

The pH levels in shampoos for humans are too harsh for a dog's skin. Ask your vet to recommend a good quality tearless shampoo specific to your dogs skin condition. With the exception of medicated shampoos, dilute the shampoo for an easier and long-lasting lather.



Washing

1. Start by wetting your dog all over, leaving his head, face, and ears for later. Shampoo his hind legs, tail, and be sure to wash the "you-know-where" parts.
2. Then shampoo the body, chest, and front legs.
3. With extra-care wet the head, face, and ears. Cup your hands over his ears to prevent water from entering.
4. Rinse thoroughly - and when you think you've done a good rinse job rinse and rinse again.



Dry immediately

Quickly wrap the dog in a towel to keep him from getting a chill. Towel dry each part of your dog.



DIY dog grooming:

A comprehensive list of do's and don'ts

Every responsible pet parent is aware of the importance of dog grooming — whether you do it yourself or make use of a dog grooming service. Grooming in the form of brushing, bathing, trimming and nail clipping is essential to keep dogs clean, healthy and comfortable. Regularly grooming your furry buddy also allows for close inspection for potential concerns like ticks, fleas, skin irritation, rashes, infections and dry skin. And if you groom your dog yourself, it also doubles up as a wonderful bonding activity.

With the lockdown firmly in place, most dog grooming businesses are currently unserviceable. This only gives you an opportunity to learn the basics of dog grooming at home! Read on for our list of do's and don'ts that is sure to help you during at-home grooming sessions with your furry baby.

Do's

Use a shampoo designed for dogs

Shampoos designed for humans have a different pH than what a dog requires. Dog shampoos are designed to keep the fur coat clean, healthy and shiny. If your pet has a skin condition, you can also consult your veterinarian for a shampoo recommendation.

Choose the right spot

Unless it's bathing, it is important to pick a well-lit space to groom your dog so that you can see what you're doing. You should also try to make sure the surface is non-slip to avoid accidents. Avoid leashing your pooch and keep treats handy if necessary.

Use assistance

It can be very helpful to have someone hold your pooch down gently while you carry out a grooming procedure that involves clippers or a pair of scissors. However, it is important to make sure this person is someone your dog is familiar with to avoid panic or stress.

Check your dog's paw pads

Inspect your pooch's paw pads to check for cracks, dryness or injuries. It is also important to check the areas between its toes for cleanliness and excessive hair growth. If you find that the hair between its toes requires a trim, use the tips of a small and blunt pair of scissors

Don'ts

Don't fit in too much at once

Don't try to fit in too many grooming tasks into one session. To make it fun and engaging for your pet, divide these tasks into shorter sessions on a frequent basis. You should also try to end each session with a task that your pet enjoys, like brushing.

Don't skip the eyes, ears and anal glands

Never miss cleaning around your furry friend's eyes, its ears and anal glands. You can do so weekly with a damp cotton ball or a soft washcloth to get rid of discharge and build-up.

Don't use non-canine fragrances

Do not spray your dog with fragrances or perfumes that are designed for humans. These perfumes may contain ingredients that can be very harmful for your pooch's skin. Sensitive canines may also face respiratory issues with perfumes.

Don't neglect grooming tools

Make sure you are using grooming tools that are designed for dogs and in some cases specific breeds. A regular bristle brush works best on breeds with short hair while a pin brush is designed for longer, silkier coats. A slicker brush can be used on all coat types and works well to detangle, remove loose fur and pick at mats. It is also important to clean your tools and brushes after each use and sharpen or replace them at regular intervals. Regular grooming can also have a positive impact on your dog's mental health as well as its behavior. When your dog looks and smells good, it also feels good. So next time you plan a DIY dog grooming session, make sure to keep this list in mind!

Taking Care of Your Dogs Oral Health

Dental hygiene is an important, yet often overlooked aspect when it comes to the overall health of a dog. More so because 80% of the dog population shows signs of periodontal disease (gum disease) by the age of three. This occurs due to poor dental hygiene which results in plaque and tartar build-up over time. Even gingivitis and inflammation can lead to serious dental illness. However, it's not always about stained teeth and bad breath when it comes to dogs.

Besides poor dental hygiene and gum disease, bad breath can have various underlying causes. Kidney disease, liver disease and diabetes can all cause bad breath in dogs. Even gastrointestinal issues such as acid reflux and indigestion may cause bad breath. Always remember to consult your vet if you notice a persistent odour from your dog's breath. Whether it is taking care of your pooch's teeth or simply managing bad breath, here are a few tips on dental care for dogs that you should keep in mind...



Regular brushing

As a pet parent, you must know that brushing your dog's teeth matters the most when it comes to dog dental care. The most effective way to prevent plaque accumulation is to brush your dog's teeth at least 3 times a week. Ensure that you inculcate this habit from puppyhood as it is easiest to train dogs at this stage. Also, make sure to use a toothbrush and toothpaste that is specially designed for dogs.



Feeding the right diet

What you feed your dog can directly affect its oral health. Not only is homemade food nutritionally inadequate, it is also not the best for your dog's teeth. The soft texture of some homemade foods does not allow for plaque removal or massaging of the gums. Usually, some sort of crunch is necessary to remove the plaque near the tops of a dog's teeth. Dry kibble like Pedigree® dog food is nutritionally balanced and can also clean your dog's teeth to keep bad breath at bay.



Dental treats

Another effective way to control plaque and tartar build-up is with dog chew sticks or chewy dog treats that are specifically formulated for dog dental care. For daily oral care for your dog, a good example is Pedigree® DentaStix®. Pedigree DentaStix® is an X-shaped dog treat that is specially designed with a gently abrasive texture to clean teeth that are hard to reach and support gum health. It is also scientifically proven to help reduce the build-up of tartar by 80%. To make treating and cleaning teeth a regular habit. Feed Pedigree® DentaStix® everyday to help keep tartar build up at bay.



Chew toys

There are various toys on the market that are designed specifically for dog dental care. Toys like dental chew bones, molar cleaning sticks and toothbrush sticks are a great way to keep your pooch's teeth clean and mind engaged at the same time. Consult your vet for a right product.



Regular dental check-ups

You should also get your pooch's teeth cleaned by a professional veterinarian at least twice a year. This will help you mitigate any major infection and keep their teeth and gums healthy. Keeping your dog's bad breath or dental hygiene in check is possible with the tips shared above.

However, identifying if your dog is suffering from a dental condition can be tough, in the early stages. Make sure to look closely at your pooch's chewing/eating habits to understand its body language. This will make it easy to recognize if it is experiencing any discomfort when it eats. You should consult your veterinarian immediately if you notice a change in eating patterns or behavior.

Pedigree **DENTASTIX®**



Cleaner gets you closer with good oral care hygiene.

One DentaStix® a day keeps tartar at bay

TRIPLE ACTION

- Reduces tartar build-up
- Cleans hard to reach teeth
- Support gum health

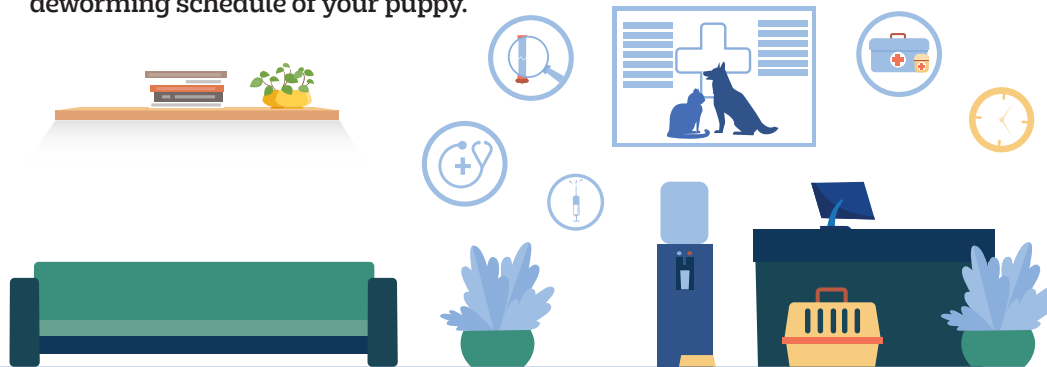


Vaccination Recommendation for Your Dog

Do limit the exposure of your puppy to other puppies and dog parks until he's received his vaccinations. This is because they need to be isolated from infections they can pick up from other dogs. On the other hand, you can allow them to meet other dogs and puppies who are healthy and have been fully vaccinated. Wait for at least 10 days from the final vaccinations before you take your puppy outside.

Vaccine	Primary Dose	Primary Dose	Booster	Recommendation
	Puppy	Adult		
Distemper	3 doses, 2-3-4 months	2 doses, 3-4 week apart	Annual	Highly recommended for all ages
Adenovirus – 2	3 doses, 2-3-4 months	2 doses, 3-4 week apart	Annual	Highly recommended for all ages
Parainfluenza	3 doses, 2-3-4 months	2 doses, 3-4 week apart	Annual	Highly recommended for all ages
Bordetella bronchiseptica	3 doses, 6-9-12 weeks	2-3 doses, 3 week apart	Annual	Recommended for dog housed in Kennels, Pounds, etc.
Parvovirus	3 doses, 2-3-4 months	1 dose	Annual	Highly recommended for all ages
Corona Virus	Begin at 6 weeks & every 3 weeks until 12 weeks of age	2-3 doses, 3 weeks apart	Annual	Optional. Incidence not known – Routine vaccination to be justified.
Leptospirosis	8 th and 11 th week	2 doses, 3-4 week apart	Annual	Typically administered in combination with Distemper and ICH
Rabies	3 months of age	1 dose	Annual	Highly recommended for all ages

*Note: Best to Consult your Veterinarian for the appropriate vaccination and deworming schedule of your puppy.



How to: Deworming your dog

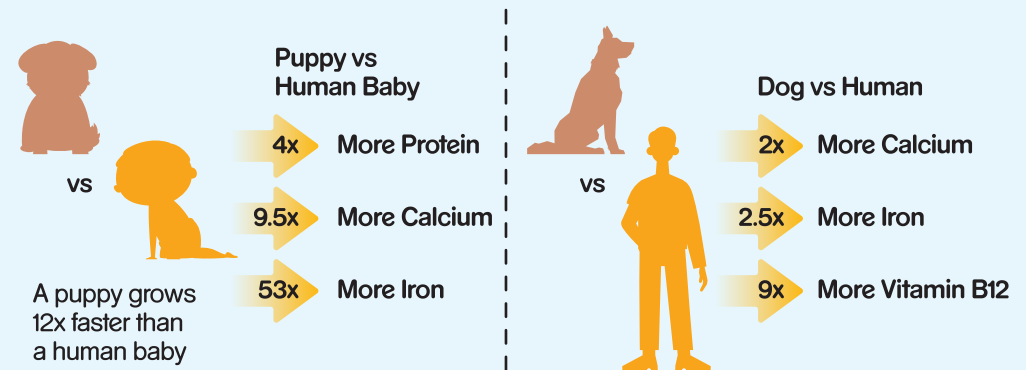
Puppies are particularly susceptible to worms. Exercise caution with your pet and their waste. The method of infection varies with the type of worm, but includes transmission via the milk while nursing, skin penetration, and oral ingestion. Gastrointestinal parasites can cause serious disorders in dogs, including life-threatening anaemia, loss of proteins from the body, loose motion, vomiting, low glucose in blood, intestinal obstruction, and weight loss.

- For most puppies, it is sufficient to deworm routinely every 2-3 weeks until 6 months of age and then as advised by your vet. There are many safe, effective products available, which will eliminate these worms.
- The most common parasites found in puppies are hookworms, roundworms (ascarids), whipworms, tapeworms and Giardia spp. If your dog is infected, you will probably notice the tapeworm segments in his fur around his back end or in the faces. They look like grains of rice and are often seen to move.
- Fleas transmit one type of tapeworm, and it is therefore wise to treat your dog for fleas if you notice any tapeworms. The ordinary roundworm tablets are not effective against tapeworms and a different form of treatment is required. Some products available for dogs are effective against both roundworms and tapeworms. Always ask your vet for advice.
- Certain canine parasites, such as hookworms, roundworms, at least three species of tapeworms and several intestinal protozoa including Giardia spp., can be transferred to humans.

*Note: Best to Consult your Veterinarian for the appropriate vaccination and deworming schedule of your puppy.

How are dogs different?

The nutritional requirements of dogs differ from humans. (Per 100kcal)



Is packaged dog food more nutritious than homemade dog food?

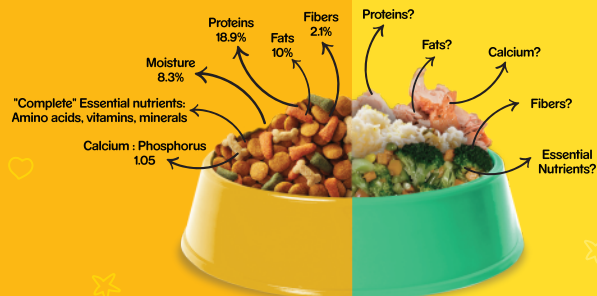
Home cooked meals, unless prepared by veterinary nutritionists, are deficient or unbalanced in nutrients required for a pet's overall well being. Some pet parents feel homemade dog food is fresh and less processed, but they miss out on the fact that this it does not constitute complete food for dogs. It is best to feed your pet prepared pet-food for it offers guaranteed nutrition, palatability, digestibility, safety and convenience. In addition, it also offers diversity without loss of consistency and cater to the specific needs of the dog. Furthermore, it is more cost-effective in the long run.

- ✓ The nutrient requirement of dogs' change depending on their life stage and lifestyle. For example, a puppy requires a higher amount of energy, protein, calcium and phosphorus for growth.
- ✓ An adult human male needs 2500 kcal/day while an adult dog of 65 kg needs 2520 kcal/day. While eating those 2520 calories, the dog has to have a higher concentration of nutrients than humans.
- ✓ Homemade diets may also contain contaminants and food-borne microbes if the owner is not as careful. Strict rules and regulations ensure that packaged pet food is free from microbial contaminants such as Salmonella or mycotoxins.
- ✓ To meet the nutritional requirements of a dog, pet parents often tend to overfeed because homemade food are not governed by any canine dietary guidelines. Prepared pet-foods always have a feeding guide to help the owner ensure the pet is fed the correct amount of calories for its life-stage and lifestyle.
- ✓ Dogs are allergic to many foods that humans consume and sometimes, they also prove to be poisonous. Manufactured pet foods never contain ingredients that are unsafe for pets.

COMMERCIAL PET FOOD VS. HOMECOOKED FOOD

Overall Calories: 346 kcal/100 grams

Overall Calories: ~120 kcal/100 grams



Dry dog food or wet dog food: Which is the better option?

Our dogs rely on us to make the best food choice on their behalf. But which type of puppy food or dog food is the best choice: dry or wet?

Advantages

Dry Food

- Convenience and crunch.
- Kibble eaters tend to have better breath than those who eat only wet food.
- Chewing dry kibble helps to keep your pet's teeth healthy by reducing plaque and tartar buildup.
- Dry food offers the necessary chew and crunch that dogs have craved since their primal pack days - when chewing and crunching were a stress-reliever.
- Unlike canned or wet food, kibble does not require refrigeration after opening and can be left out.



Wet Food

- Meaty, moist, and tasty.
- Ideal for fussy eaters or pets with illnesses, wet food is made primarily of protein and fat, with few carbohydrates and is tastier as well as easily digested.
- The soft, smooth texture however doesn't give your pooch an opportunity to do the crunching that can help clean his teeth.
- With its high moisture content (75% to 80%), wet food helps keep your furry friend hydrated, benefiting the urinary tract.



Benefits of Mixed Feeding for Dogs

Feeding your dog a mixed diet of wet and dry foods provide a nutritionally complete and balanced meal. When done regularly, dogs obtain the unique complementary benefits of such food.

Mixed feeding is encouraged on a daily basis given that both types of food can offer different benefits that can keep your dog happy and healthy.

Dry Food Benefits:

- Chewing the crunchy kibble helps support good oral health
- Dry food is a concentrated source of nutrition and energy
- Made from quality protein
- Complete & Balanced Nutrition with 38 essential nutrients
- Dry food can be less expensive than wet on a \$/kg basis



Wet Food Benefits:

- High moisture content thus reducing the risk of urinary disease
- Contains less calories per gram than dry food
- Made from quality protein
- Complete & Balanced Nutrition with 38 essential nutrients
- Delivers a variety of tastes and textures

Why Pedigree®

We work hard to develop products that will help keep your dog happy and healthy. We've spent the last 60 years developing a range of dog food that gives your dog the variety he wants and loves, along with just the right balance of vitamins, fiber and protein he needs — at every stage of life.

Prepared Pet Food Vs Home Food

They also contain more moisture versus dry food, which is good for urinary tract health. Dogs have different nutritional requirements from humans and the food you eat might be harmful to your pet! Home cooked meals, unless prepared by veterinary nutritionists, lack in the basic nutrients required for the healthy growth and development of your pet. Prepared pet foods, on the other hand, Pedigree® Dry offer guaranteed nutrition, palatability, digestibility, safety and convenience. In addition, they also offer diversity without loss of consistency and offer better 100% complete and balanced, Pedigree® Dry has value for money than home cooked food.

Science & Research

We work closely with the experts at the WALTHAM® Centre for Pet Nutrition to develop great quality, nutritious food that your dog will love. Here, fundamental pet-focused research, supporting Pedigree®, delivers scientific breakthroughs Pedigree® Oral Care in the areas of pet nutrition, health, well-being and behavior.

6 Weeks to the Five Signs of Good Health

All Pedigree® dry and wet complete main meal food is 100% nutritionally complete to reduce tartar by up to 80%, cleans hard ACTION and balanced. Developed by veterinary nutritionists and experts, our pet food to reach teeth and support gum health. 7 is designed to provide the nutrients your dog needs, and in addition, contain ingredients to support the five signs of good health.

Setting the Highest Standards

At Pedigree® we know it is vital that our dog food smells as fresh and appetizing to dogs as possible. We only use the best quality approved ingredients to ensure our products are not only healthy but also very appealing to dogs. All our raw materials are sourced from approved suppliers and our factories are independently inspected to the same standard as those used to produce human food.

Explore Variety and Flavours

Pedigree® Wet

100% complete and balance, our wet foods contain less calories per gram than average dry food, and so can help maintain a healthy bodyweight. They also contain more moisture versus dry food, which is good for urinary tract health.



Pedigree® Dry

100% complete and balance, Pedigree® Dry has fibre to help support good digestive health and the individual 'kibbles' of food help to sustain good oral health



Pedigree® Oral Care

Pedigree® DentaStix® with its new and improve Formulation provides Triple Action benefits scientifically proved to reduce tartar by up to 80%, cleans hard to reach teeth and support gum health.



Pedigree® Treat

Pedigree® Treats offer a responsible way to bond with your dog that comes with irresistible taste, variety of formats & variants that dog could enjoy everyday. Do keep in mind that only 10% of your dog's daily calories should come from treats and other foods that aren't 100% Complete and Balance.



How to: Bathing your dog

Bathing your dog can be a fun activity, not just for him, but you are too. If she's already familiar with bath time, it's only a matter of technique. For a novice dog, first get her used to the idea of standing in the bath – you could even make this a game for treats! We generally do not advise bath for young puppies, particularly in winter. A sponge bath with plain lukewarm water ought to do the trick. When he grows up to an adult, you can use dog shampoo, generally twice a month.

- Brush Before Wetting**
Always brush the coat before wetting it. This will remove any matted or loose hair from his coat and will also make cleaning with the shampoo much easier.
- Sink, tub, or outdoors?**
Little dogs are easier. You can bathe them in a kitchen sink. A larger dog will require a tub. Use a hair catcher in the drain to prevent clogging.
- Shampoo**
The pH levels in shampoo for humans are too harsh for a dog's skin. Ask your vet to recommend a good quality tearless shampoo specific to your dog's skin condition. With the exception of medicated shampoo, dilute the shampoo for an easier and long-lasting lather.
- Washing**
1. Start by wetting your dog all over, leaving his head, face, and ears for later. Shampoo his hind legs, tail, and be sure to wash the "you-know-where" parts.
2. Then shampoo the body, chest, and front legs.
3. With extra-care wet the head, face, and ears. Cup your hands over his ears to prevent water from entering.
4. Rinse thoroughly – and when you think you've done a good rinse job rinse and rinse again.
- Dry immediately**
Quickly wrap the dog in a towel to keep him from getting a chill. Towel dry each part of your dog.

Better Cities for Pets™

At MARS Petcare, we truly believe that pets make the world a better place. We are committed to live our purpose A Better World For Pets™.

To help fulfill our purpose, we aspire to end pet homelessness in a workplace where:

- No pets are uncared for.
- No pets are unwanted.
- No pets are unloved.

Adoption Manual

Feed the good™

Better Cities for Pets™ is about creating an environment that is conducive for pets and their welfare, and make life better for pets and the Community.

Teaching responsible pet ownership. Advocating for pet-friendly public spaces. Welcoming and loving all types of dogs and cats.

We aspire to help re-home homeless animals across Southeast Asia and are kick-starting our efforts in Thailand and the Philippines.

11

DIY dog grooming: A comprehensive list of do's and don'ts

Every responsible pet parent is aware of the importance of dog grooming – whether you do it yourself or make use of a dog grooming service. Grooming in the form of brushing, bathing, trimming and nail clipping is essential to keep dogs clean, healthy and comfortable. Regularly grooming your furry buddy also allows for close inspection for potential concerns like ticks, fleas, skin irritation, rashes, infections and dry skin. And if you groom your dog yourself, it also doubles up as a wonderful bonding activity.

With the lockdown firmly in place, most dog grooming businesses are currently unviable. This only gives you an opportunity to learn the basics of dog grooming at home! Read on for useful vet food is made up that is sure to help you during at-home grooming sessions with your furry baby.

Do's

- Use a shampoo designed for dogs**
Shampoos designed for humans have a different pH than what a dog requires. Dog shampoos are designed to keep their fur clean, healthy and shiny. If your pet has a skin condition, you can also consult your veterinarian for a shampoo recommendation.
- Choose the right spot**
Unless it's bathing, it's important to pick a well-lit space to groom your dog so that you can see what you're doing. You should also try to avoid areas with a lot of non-slip to avoid accidents. Avoid washing your paws as they keep treats handy if necessary.
- Use assistance**
It can be very helpful to have someone hold your pooch down gently while you carry out a grooming procedure that involves clipping or a nail clipper. However, it is important to make sure this person is someone your dog is familiar with to avoid panic or stress.
- Check your dog's paw pads**
Inspect your pooch's paw pads between his toes. It is also important to check your dog's paws for cleanliness and excessive hair growth. If you find that the hair between his toes requires a trim, use the tip of a small and blunt pair of scissors.

Don'ts

- Don't fix in too much at once**
Shampoos designed for humans have a different pH than what a dog requires. Dog shampoos are designed to keep their fur clean, healthy and shiny. If your pet has a skin condition, you can also consult your veterinarian for a shampoo recommendation.
- Don't skip the eyes, ears and anal glands**
Always clean your dog's eyes, ears and anal glands. You can do so with a damp cotton ball or a soft wet washcloth. If you get dirt or discharge and build-up.
- Don't use non-canine fragrances**
Do not use any dog wash fragrances or perfumes that are designed for humans. These fragrances contain ingredients that can be very harmful for your pooch's skin. Sensitive canine may also have respiratory issues with perfumes.
- Don't neglect grooming tools**
Make sure that your grooming tools that are designed for dogs and in some cases for specific breeds. A regular blade brush works best on breeds with short hair while pin brushes is designed for longer, slicker coats. A slicker brush can cut over on all coat types. A slicker brush can also damage, remove loose fur and pick at mats. It is also important to clean your tools and brushes after each use and shampoos or soaps. There are also hand sanitizers and disinfectants that can have a positive impact on your dog's mental health. If you use hand sanitizers, make sure they are alcohol-free. If you use dog tools and smells, pool. It is also best to use a brush that is specifically designed for your dog's coat type. If you use a brush that is specifically designed for your dog's coat type, make sure to keep this list in mind!

12

Choosing to adopt a pet is a great decision!

Not only are you able to give a shelter animal a home, you will get to enrich your life and make your community better and pet-friendly!

Here are 5 things to consider when adopting a pet:

- 1. Choose the right pet**
 - Consider you and your family's lifestyle, needs and preferences before deciding on the type and size of pet.
 - Speak to an adoption counselor, previous owner or foster families to find your right match.
- 2. Be prepared ahead of time**
 - Plan for the arrival of your pet; do your research to understand its needs.
 - Get your home ready for your new pet and gather supplies early.
- 3. Create a pet-friendly space**
 - Set up dedicated space for your pet.
 - Store medication and dangerous food away.
 - Put away electric cords, tangles and cleaning supplies.
 - Remove toxic or poisonous plants.
- 4. Arrange for regular vet care.**
 - Visit the vet for a health check and arrange for necessary vaccinations.
 - Routine checkups can protect your pets from life-threatening conditions by detecting disease early.
- 5. Be prepared for emergencies**
 - Ensure your pet wears collars and tag wit up-to-date contact information.
 - Introduce your pet to the neighborhood to help pets and people in communities familiarize with one another.

12

Taking Care of Your Dogs Oral Health

Dental hygiene is an important, yet often overlooked aspect when it comes to the overall health of a dog. More so because 80% of the dog population shows signs of periodontal disease (gum disease) by the age of three. This occurs due to poor dental hygiene which results in plaque and tartar build-up over time. Even gingivitis and inflammation can lead to serious dental illness. However, it's not always about stained teeth and bad breath when it comes to dogs.

Besides poor dental hygiene and gum disease, bad breath can have various underlying causes. Kidney disease, liver disease and diabetes can all cause bad breath in dogs. Even gastrointestinal issues such as acid reflux and indigestion may cause bad breath. Always remember to consult your vet if you notice a persistent odour from your dog's breath. Whether it is taking care of your pooch's teeth or simply managing bad breath, here are a few tips on dental care for dogs that you should keep in mind...

Regular brushing
As a pet parent, you must know that brushing your dog's teeth most the most when it comes to dog dental care. The most effective way to prevent plaque accumulation is to brush your dog's teeth at least 3 times a week. Ensure that you incentivize this habit from puppyhood as it is easiest to train dogs at this stage. Also, make sure to use a toothbrush and toothpaste that are specifically designed for dogs.

Feeding the right diet
What you feed your dog can directly affect its oral health. Not only is homemade food nutritionally inadequate, it is also not the best for your dog's teeth. The soft texture of some homemade foods does not allow for plaque removal or massaging of the gums. Usually, some sort of crunch is necessary to remove the plaque near the tops of a dog's teeth. Dry kibble like Pedigree® dog food is nutritionally balanced and can also clean your dog's teeth to keep bad breath at bay.

Dental treats
Another effective way to control plaque and tartar build-up is with dog chew sticks or chewy dog treats that are specifically formulated for dog dental care. For daily oral care for your dog, a good example is Pedigree® DentaStix™. Pedigree DentaStix™ is an X-shaped dog treat that is specially designed with a gently abrasive texture to clean teeth that are hard to reach and support gum health. It is also scientifically proven to help reduce the build-up of tartar by 60%. To make treating and cleaning teeth a regular habit, feed Pedigree® DentaStix™ everyday to help keep tartar build-up at bay.

Cleaner gets you closer with good oral care hygiene.
One DentaStix™ a day keeps tartar at bay.

Reduces tartar build-up. Cleans hard to reach teeth. Supports gum health.

13

First Day at Home

This is a big move for your dog! So do ensure you have all the time you can spare to be happy for him or her to go to the toilet. Keep them there until they go, praise them afterwards then take them back into the house. Dogs are creatures of habit and will return to the same place to go to the toilet. For further advice, read our articles on toilet training and what to do if your puppy has an accident.

- When you arrive home, take your dog straight to the area where you will be happy for him or her to go to the toilet. Keep them there until they go, praise them afterwards then take them back into the house. Dogs are creatures of habit and will return to the same place to go to the toilet. For further advice, read our articles on toilet training and what to do if your puppy has an accident.
- Keep your daily routine the same from day one. It may be tempting to shower your rescue dog with relaxed and spontaneous gestures, but you will end up with an unsettled dog.
- In the same vein, don't fall into the trap of feeding your dog on demand. His or her appetite may be erratic initially, but it will settle faster with a regular routine.
- On the first few days, stick to the diet given to you by the rescue home. You can change it slowly over time by gradually weaning from old food to new food over 5-7 days.
- Don't let your dog off the lead in any open spaces until you've had a chance to practice recall in secure areas. Recall is an important part of the bonding process. For further information, read our article on recall.
- Your dog will need a few days to get used to your household so don't introduce any new people until they're ready.
- Consistency will be very important to your new dog so decide on house rules such as where the dog is and isn't allowed and make sure everyone sticks to them.
- For the same reason, if you have a cat, do not introduce them immediately. Try swapping their scents so that both your cat and dog are familiar with each other before they're fully introduced.
- After seven days or so, take your dog along to your local vet to register them and discuss any future veterinary treatment. Remember to take your vaccination certificate with you.

13

Vaccination Recommendation for Your Dog

Do limit the exposure of your puppy to other puppies and dog parks until he's received his vaccinations. This is because they need to be isolated from infections they can pick up from other dogs. On the other hand, you can allow them to meet other dogs and puppies who are healthy and have been fully vaccinated. Wait for at least 10 days from the final vaccinations before you take your puppy outside.

Vaccine	Primary Dose	Primary Dose	Booster	Recommendation
Distemper	3 doses, 2-3-4 months	2 doses, 3-4 week apart	Annual	Highly recommended for all ages
Adenovirus-2	3 doses, 2-3-4 months	2 doses, 3-4 week apart	Annual	Highly recommended for all ages
Parainfluenza	3 doses, 2-3-4 months	2 doses, 3-4 week apart	Annual	Highly recommended for all ages
Bordetella bronchiseptica	3 doses, 6-8-2 weeks	2-3 doses, 2 week apart	Annual	Recommended for dog housed in kennels, pounds, etc.
Parvovirus	3 doses, 2-3-4 months	1 dose	Annual	Highly recommended for all ages
Leptospirosis	Begin at 6 weeks until 12 weeks of age	2-3 doses, 3 weeks apart	Annual	Optional. Incidence not known - Routine vaccination to be justified.
Cornuoplasma	0th and 1st week	2 doses, 3-4 week apart	Annual	Typically administered in combination with Distemper and ICH
Rabies	3 months of age	1 dose	Annual	Highly recommended for all ages

*Note: Best to Consult your Veterinarian for the appropriate vaccination and deworming schedule of your puppy.

14

10 Dog Training Do's and Don'ts

To help make training easier for you, here's a list of Top 10 Training Do's and Don'ts:

Do's

- Focus on your dog. Bring him into your world by understanding his instincts and natural behaviors.
- Be honest. Never fool him into doing what you honor or tease him with commands you teach.
- Begin each command with the end in sight. Reward him lavishly—but only when she completes the task you've set.
- Be consistent. Always use the same words for desired behavior and the same tone of voice.
- Think ahead. Anticipate your dog's actions before she moves.
- Reward immediately.
- Enjoy yourself. Play with your dog before and after each training session.
- Be patient. Allow enough time for your pooch to take in your command and obey.
- Be kind. A poorly trained dog is the fault of the trainer, not the dog.

Don'ts

- Don't allow others to pamper him any more than you. You're the de facto alpha dog in your home pack—and he must look to you for leadership.
- Don't finish a training session on a bad note. Remain positive and praise him for progress.
- Don't punish him while you're angry.
- Don't lose your temper.
- Don't chase him. The idea is to make him come to you.
- Don't deceive. Never show him with praise to bring him to you and then punish him because he's been naughty.
- Don't repeat. Be patient, but don't overuse commands.
- Don't discipline for disobedience, unless you're certain that he understood the command you gave. Discipline and punishment are two very different things.
- Don't reward your dog for a given a given behavior. Then, later, admonish him for the same behavior. Consistency is crucial.
- Don't allow anybody else to command.

*If your efforts are unsuccessful, then talk to a professional trainer.

14

How to: Deworming your dog

Puppies are particularly susceptible to worms. Exercise caution with your pet and their waste. The method of infection varies with the type of worm, but includes transmission via the milk while nursing, skin penetration, and oral ingestion. Gastrointestinal parasites can cause serious disorders in dogs, including life-threatening anaemia, loss of protein from the body, loose motion, vomiting, low glucose in blood, intestinal obstruction, and weight loss.

For most puppies, it is sufficient to deworm routinely every 2-3 weeks until 6 months of age and then as advised by your vet. There are many safe, effective products available, which will eliminate these worms.

Fleas transmit one type of tapeworm, and it is therefore wise to treat your dog for fleas if you notice any tapeworms. The ordinary roundworm tablets are not effective against tapeworms and a different form of treatment is required. Some products available for dogs are effective against both roundworms and tapeworms. Always ask your vet for advice.

Certain canine parasites, such as hookworms, roundworms, at least three species of tapeworms and several intestinal protozoa including Giardia spp., can be transferred to humans.

*Note: Best to Consult your Veterinarian for the appropriate vaccination and deworming schedule of your puppy.

How are dogs different?

The nutritional requirements of dogs differ from humans. (Per 100kcal)

Puppy vs Human Baby	Dog vs Human
4x More Protein	2x More Calcium
9.5x More Calcium	2.5x More Iron
53x More Iron	9x More Vitamin B2

A puppy grows 2x faster than a human baby.

15

How do I introduce my new dog to my cat?

If your new pooch doesn't immediately have the run of the house, this will help your cat feel less threatened. Do keep these dog training vitals in mind to ensure a smooth transition for both your dog and cat.

- It's a good idea to keep your new dog in an indoor pen when you first bring him home, or use a wire crate to limit your dog to one room.
- Place the pen - with food, water, bed and toys - in the busiest part of the house. This will allow your cat to investigate the dog at its own pace, without getting too close. They both can get used to each other's scent.
- When both pets seem comfortable with each other's presence, try feeding your cat outside the pen while the dog is eating their food inside. This will help them to get used to closer contact.
- The next stage is to try introducing them outside the pen. Hold your dog and allow both animals to observe and interact with each other.
- Over the next few days bring the dog out of the pen more frequently, allowing him to explore. As your cat becomes more tolerant of its new housemate, you can increase the contact between them.
- Keep your dog away from your cat's food. Cat food is normally very high in protein and could affect your dog adversely.

15

Is packaged dog food more nutritious than homemade dog food?

Home cooked meals, unless prepared by veterinary nutritionists, are deficient or unbalanced in nutrients required for a pet's overall well being. Some pet parents feel homemade dog food is fresh and less processed, but they miss out on the fact that this does not constitute complete food for dogs. It is best to feed your pet prepared pet-food for it offers guaranteed nutrition, palatability, digestibility, safety and convenience. In addition, it also offers diversity without loss of consistency and can target the specific needs of the dog. Furthermore, it is more cost-effective in the long run.

The nutrient requirement of dogs' change depending on their life stage and lifestyle. For example, a puppy requires a higher amount of energy, protein, calcium and phosphorus for growth.

An adult human male needs 2500 kcal/day while an adult dog of 65 kg needs 2520 kcal/day. While eating those 2520 calories, the dog has to have a higher concentration of nutrients than humans.

Homemade diets may also contain contaminants and food-borne microbes if the owner is not as careful. Strict rules and regulations ensure that packaged pet food is free from microbial contaminants such as Salmonella or mycotoxins.

To meet the nutritional requirements of a dog, pet parents often tend to overfeed because homemade food are not governed by any canine dietary guidelines. Prepared pet-foods always have a feeding guide to help the owner ensure the pet is fed the correct amount of calories for its life-stage and lifestyle.

Dogs are allergic to many foods that humans consume and sometimes, they also grow to be poisonous. Manufacture pet foods never contain ingredients that are unsafe for pets.

COMMERCIAL PET FOOD VS. HOMECOOKED FOOD

Overall Calories: 346 kcal/100 grams vs Overall Calories: 220 kcal/100 grams

Dry Food Benefits:

- Chewable texture helps support good oral health.
- Dry food is a concentrated source of nutrients.
- Made from quality protein.
- Complete & Balanced Nutrition with 25 essential vitamins.
- Dry food can be less expensive than well-cooked & high-broth.

Wet Food Benefits:

- High moisture content helps support good oral health.
- Contains less calories.
- Made from quality protein.
- Complete & Balanced Nutrition with 25 essential vitamins.
- Delivers a variety of tastes and textures.

16

Adopting A Second Dog

Is it a good idea to adopt a new dog when you have a senior dog at home?

Things to consider:

- Proper introductions when bringing a new dog into a family with a senior dog, it's important to make sure that the two dogs get along harmoniously. Getting them both off on the right paw is vital to their future relationship, so make sure you introduce the dogs prior to "moving in" day. It's a good idea to do this in a pleasant environment on neutral ground, not in what will be their shared home. Both dogs should be kept leashed during the meeting, with a caregiver for each dog. This ensures that it will be easy to separate them if they start to show signs of aggression. If there is growling, or other signs of aggression, separate the dogs, distract them each with play, and then try again.
- Don't feed! It's important that you do everything possible to make the experience pleasant, as this is what they will remember about the other dog. The transition will be easier if they associate each other with treats and a fun day at the park, rather than being reminded of a scolding when they see the other dog. Of course, part of ensuring that the experience is pleasant is to be sure that the dogs are up-to-date on their vaccinations.

A senior dog and a puppy.

If you have an older dog, and are bringing a puppy into your home, the older dog may feel that his turf is being invaded. As a result, he may be wary of the puppy. To help the senior canine feel more comfortable, its a good idea to wait until the puppy is asleep before you introduce the dogs. While keeping a firm grip on the older dogs collar, let him sniff around the puppy. Also, make sure the older dog gets some quiet time alone with you during the first few weeks of him sharing his home with the puppy.

16

Dry dog food or wet dog food: Which is the better option?

Our dogs rely on us to make the best food choice on their behalf. But which type of puppy food or dog food is the best choice: dry or wet?

Advantages

Dry Food	Wet Food
Convenience and crunch. Kibble eaters tend to have better breath than those who eat only wet food.	Meaty, moist, and tasty. Ideal for fussy eaters or pets with illnesses, wet food is made primarily of protein and fat, with few carbohydrates and is tastier as well as easily digested.
Chewing dry kibble helps to keep your pet's teeth healthy by reducing plaque and tartar buildup. Dry food offers the necessary chew and crunch that dogs have craved since their primal pack days - when chewing and crunching were a stress-reliever.	The soft, smooth texture however offers an opportunity to do the crunching that can help clean his teeth.
Homemade diets may also contain contaminants and food-borne microbes if the owner is not as careful. Strict rules and regulations ensure that packaged pet food is free from microbial contaminants such as Salmonella or mycotoxins.	With its high moisture content (75% to 80%), wet food helps keep your furry friend hydrated, benefiting the urinary tract.
For most puppies, it is sufficient to deworm routinely every 2-3 weeks until 6 months of age and then as advised by your vet. There are many safe, effective products available, which will eliminate these worms.	Wet food does not require refrigeration after opening and can be left out.

Benefits of Mixed Feeding for Dogs

Mixed feeding is encouraged on a daily basis given that both types of food offer complementary benefits that can help support your dog's overall health and well-being.

When one equally dogs obtain the unique complementary benefits of each food.

17

The Five-point Health Check for Dogs

Just as we take care of ourselves, we must also know how to do it for our dogs. Remember to examine all of the below five areas in your dog:

- Teeth and Gums**
Regular veterinary dental cleaning along with specially designed toothbrushes, toothpaste and oral care treats such as DentaStix™ can help reduce tartar build-up. Lift your dog's lips away from his gums and press a finger firmly over an upper tooth. When taken away, the white color of the finger imprint on the gum should return to pink. Open his mouth to inspect all his teeth. Beware of tartar build-up, which is yellow to dark brown in color, and can lead to periodontal disease. Get it checked by a vet.
- Spot Checks**
Check for unusual lumps or bumps by placing both hands on top of your dog's head and moving down under the chin. Move your hands behind the front legs, under the shoulders, down the back, over the hips, and down the legs. Inspect your dog's claws and footpads for cuts or cracks. Report unusual lumps to a veterinarian. Do keep your dog's toe-nails trimmed as and when required.

17

Why Pedigree®

We work hard to develop products that will help keep your dog happy and healthy. We've spent the last 60 years developing a range of dog food that gives your dog the variety he wants and loves, along with just the right balance of vitamins, fiber and protein he needs – at every stage of life.

- Prepared Pet Food Vs Home Food**
They also contain more moisture versus dry food, which is good for urinary tract health. Dogs have different nutritional requirements from humans and the food you eat might be harmful to your pet. Home cooked meals, unless prepared by veterinary nutritionists, lack in the basic nutrients required for the healthy growth and development of your pet. Prepared pet foods, on the other hand, Pedigree® Dry offer guaranteed nutrition, palatability, digestibility, safety and convenience. In addition, they also offer diversity without loss of consistency and offer better 100% complete and balanced. Pedigree® Dry has value for money than home cooked food.
- Science & Research**
We work closely with the experts at the WALTHAM Centre for Pet Nutrition to develop great quality, nutritious food that your dog will love. Here, fundamental pet-focused research, supporting Pedigree®, delivers scientific breakthroughs. Pedigree® Oral Care in the areas of pet nutrition, health, well-being and behavior.
- 6 Weeks to the Five Signs of Good Health**
All Pedigree® dry and wet complete main meal food is 100% nutritionally complete to reduce tartar by up to 80%, clean hair ACTION and balanced. Developed by veterinary nutritionists and experts, our pet food is rich in essential vitamins and minerals. It is designed to provide the nutrients your dogs need, and in addition, contain ingredients to support the five signs of good health.
- Setting the Highest Standards**
At Pedigree® we know it's vital that our dog food smells as fresh and appetizing to dogs as possible. We only use the best quality approved ingredients to ensure our products are not only healthy but also very appealing to dogs. All our raw materials are sourced from approved suppliers and are factory are inspected daily to ensure they are the same standard as those used to produce human food.

18

Eyes and Ears

- Look for normal pupil size and responsiveness of the pupil to light. A colored discharge can be a sign of infection. Ears should appear clean, pink in color (not bright pink), and free of debris and strong odors. Gently pull down the lower eyelid to check for a pink color. The whites of the eye should be glossy white with no redness. Check for wax, especially dark wax, which may indicate the presence of ear mites or infection.

Coat and Skin

- Dogs with a dull or matted coat may not be receiving all necessary nutrients or may have a disease condition.
- The coat should feel smooth from head to tail. Part the fur near the head and along the spine to check for flakes, scabs, or cuts.
- Check for the signs of fleas at the base of the tail and on the rump and stomach. Fleas can be treated with dips, shampoos, or sprays.

Weight Check

- Weight your dog regularly, but weight is not a reliable parameter.
- Your dog an overweight, discuss a weight reduction program with your vet. Cut out all treats and table snacks.
- Implement an exercise program. Starting with short periods and gradually increasing the time.

18

Explore Variety and Flavours

Pedigree® Wet
100% complete and balanced, our wet foods contain less calories per gram than average dry food, and so can help maintain a healthy bodyweight. They also contain more moisture versus dry food, which is good for urinary tract health.

Pedigree® Dry
100% complete and balanced, Pedigree® Dry has fibre to help support good digestive health and the individual kibble's soft help to sustain good oral health.

Pedigree® Oral Care
Pedigree® DentaStix™ with its new and improved formulation proven to reduce tartar by up to 80%, cleans hard to reach teeth and support gum health.

Pedigree® Treat
Pedigree® Treats offer a responsible way to bond with your dog that comes with irresistible taste, variety of formats & variants that dog could enjoy everyday. To keep mind that only 10% of your dog's daily calories should come from treats and other foods that aren't 100% Complete and Balanced.

19